



Apartment (EPC Rating: C)

# MILLS BAKERY, ROYAL WILLAM YARD, PLYMOUTH.

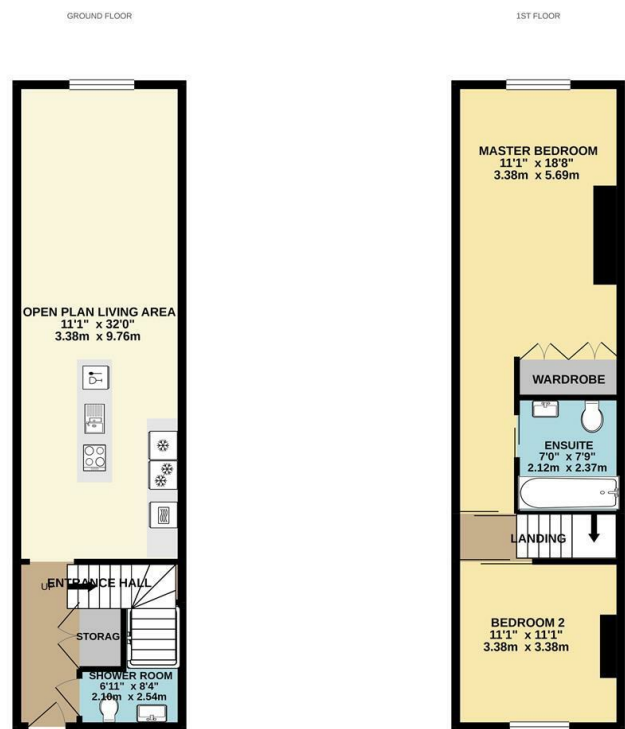
PCM

## £1,400

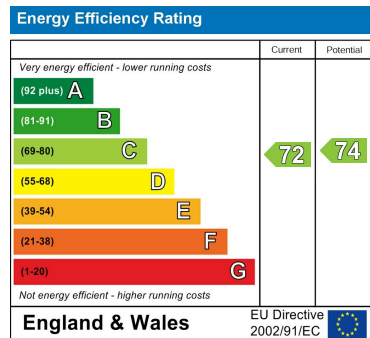
# 2 Bedroom Apartment located in Plymouth

**\*BREATH-TAKING WATER VIEWS\*** LUXURIOUS third floor apartment **BOASTING** views across **MAYFLOWER MARINA** and **RIVER TAMAR** | **SPACIOUS** two bedroom apartment | **OPEN PLAN** living area with **MODERN** fitted kitchen with **INTEGRATED** Appliances | Finished to a beautiful standard with **PERIOD FEATURES** | **EPC Rating C** | **Deposit £1615.38** | **Council Tax Band C**

This property is available Unfurnished and is Managed by Lang Town and Country



Council Tax Band  
**C**  
Energy Performance Graph



Call us on  
**01752 201010**  
[enquiries@langtownandcountry.com](mailto:enquiries@langtownandcountry.com)  
[www.langtownandcountry.com](http://www.langtownandcountry.com)

Agents Note: Whilst every care has been taken to prepare these particulars, they are for guidance purposes only. All measurements are approximate and are for general guidance purposes only and whilst every care has been taken to ensure their accuracy, they should not be relied upon and potential buyers are advised to recheck the measurements.